

HOBAN

Temporary Employee Induction Handbook



HOBAN

www.hoban.com.au

Welcome

Congratulations and a warm welcome to the HOBAN Recruitment temporary team! Your career with HOBAN Recruitment offers you the benefits of competitive pay rates, flexible hours and challenging assignments across our broad range of clients.

We have designed this handbook to aid your success as a HOBAN Recruitment temporary. You will find information about HOBAN Recruitment, payroll procedures, important policies and tips for success on assignment. Please use this handbook as a reference guide when you have a question about an assignment with HOBAN Recruitment.

We have tried to answer most of the questions asked regularly by our temporary team. However, if there is something you would like to know more about, please do not hesitate to contact your HOBAN Recruitment consultant.

Table of Contents

- Welcome 2
- About HOBAN Recruitment 3
- Branch Locations..... 4
- HOBAN Covid Safety Poster 5
- On Assignment 6
- Important Payroll Information 8
- Work Health Safety and Environment..... 11
- EEO, Bullying & Harassment Policy..... 16
- Privacy Policy & Collection Statement 17
- Diversity Policy..... 20
- Email, Intranet & Internet Policy..... 22
- Social Media Policy 24
- Aims and Beliefs 28

About HOBAN Recruitment

The HOBAN Story

Lynne Hoban Personnel began in 1965 and was one of the first agencies in Melbourne to specialise in temporary staff recruitment. Lynne was well known for the high level of care she provided her job seekers and soon acquired an unparalleled reputation for having the best temps, with an impressive client base.

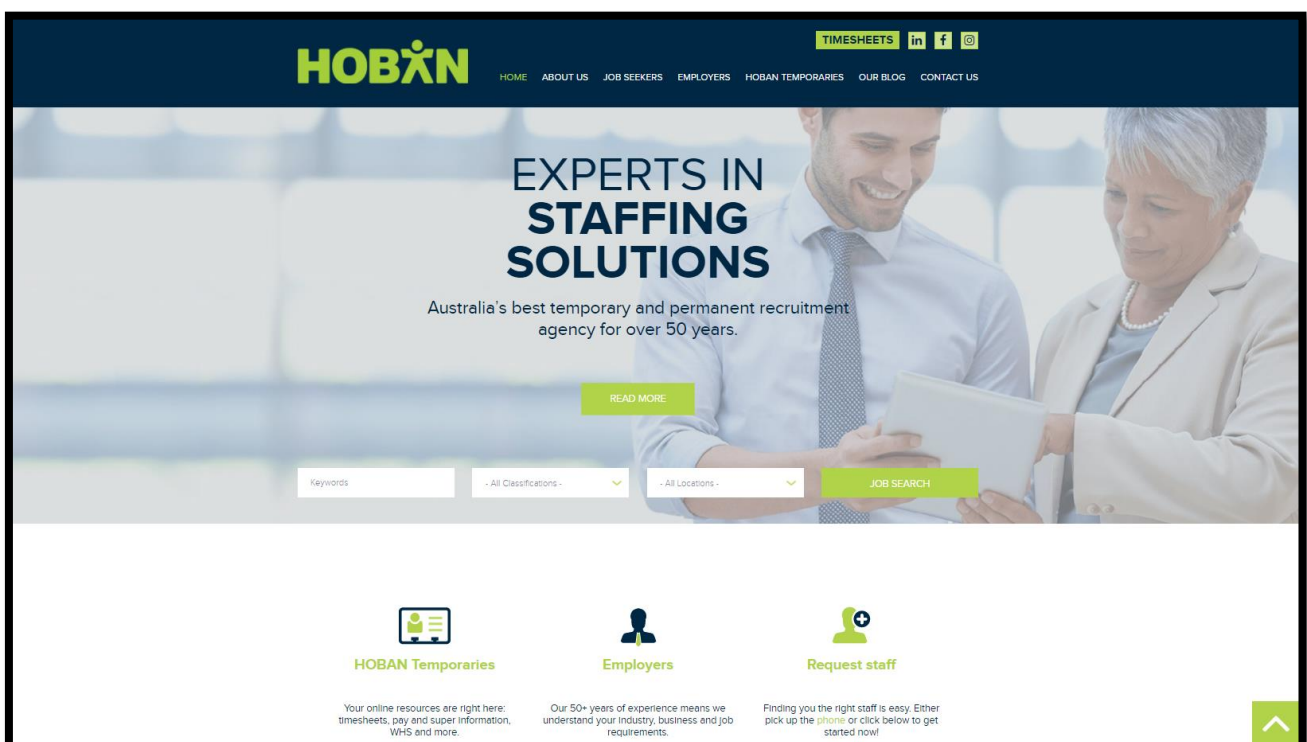
Lynne sold the business around 40 years ago, but the business carrying her name lives on and grows from strength to strength. With continued growth, HOBAN Recruitment has expanded to include a national network of branches providing recruitment services across Australia.

HOBAN Recruitment Today

HOBAN Recruitment continues to have a first-class reputation for providing quality service across a number of industry sectors. Importantly, we still retain the original founding principles that Lynne began our business with, based on quality and customer service, as well as a number of temporary staff and clients who have been with us for several years.

An Outsourcing company

HOBAN Recruitment is part of the Outsourcing Group of Companies, which includes our sister company RED Appointments, SSA, Clicks IT Recruitment and INDEX Consultants.



www.hoban.com.au

Branch Locations

Victoria		
Melbourne Level 35, 360 Collins Street Melbourne VIC 3000 Phone: 03 9203 4900 Office Hours: 8am to 6pm Mon to Fri	Laverton Suite G03, 45 Leakes Road Laverton North VIC 3026 Phone: 03 9325 3200 Office Hours: 7am to 6pm Mon to Fri	Dandenong Suite 106, 166-188 Monash Drive Dandenong South VIC 3175 Phone: 03 9554 4200 Office Hours: 7am to 6pm Mon to Fri
Australian Capital Territory		
Geelong Suite 4, 200 Malop Street Geelong VIC 3220 Phone: 03 5273 6100 Office Hours: 8am to 6pm Mon to Fri	Keilor East Suite 101, 16A Keilor Park Drive Keilor East VIC 3033 Phone: 03 8359 2800 Office Hours: 7am to 6pm Mon to Fri	Canberra Level 9, 224 Bunda Street Canberra ACT 2601 Phone: 02 6108 3800 Office Hours: 8am to 6pm Mon to Fri
New South Wales		
Sydney Level 14, 55 Clarence Street Sydney NSW 2000 Phone: 02 9978 1700 Office Hours: 8am to 6pm Mon to Fri	Seven Hills Suite 1, 197 Prospect Highway Seven Hills NSW 2147 Phone: 02 8834 8977 Office Hours: 7am to 6pm Mon to Fri	South West Sydney Suite 1, 197 Prospect Highway Seven Hills NSW 2147 Phone: 02 8797 2740 Office Hours: 7am to 6pm Mon to Fri
Queensland		
Brisbane Level 8, 127 Creek Street Brisbane QLD 4000 Phone: 07 3027 2500 Office Hours: 7am to 6pm Mon to Fri	Western Australia	
Perth The Park Business Centre, 45 Ventnor Avenue West Perth WA 6005 Phone: 08 9230 5600 Office Hours: 8am to 6pm Mon to Fri	South Australia	
Adelaide Level 7, 70 Pirie Street Adelaide SA 5000 Phone: 08 8111 8500 Office Hours: 8am to 6pm Mon to Fri		
Accounting & Finance / Executive		
Melbourne Level 35, 360 Collins Street Melbourne VIC 3000 Phone: 03 9203 4900 Office Hours: 8am to 6pm Mon to Fri	After Hours 1300 554 750 HOBAN's After Hours team are available to take your call, outside office hours, 7 days a week. Please call our office number and we will assist you 24/7.	

Steps for COVID-19 safe behaviour in the workplace

Everyone must practice COVID safe behaviours to slow the spread of Coronavirus (COVID-19)

What is Social Distancing?

One way to slow the spread of viruses is social distancing (also called physical distancing). The more space between you and others, the harder it is for the virus to spread. Social distancing includes ways to stop or slow the spread of infectious diseases. It means less contact between you and other people.

Why is it important?

Social distancing is important because COVID-19 is most likely to spread from person-to-person through:

Direct close contact with a person while they are infectious or in the 24 hours before their symptoms appeared.

Close contact with a person with a confirmed infection who coughs or sneezes.

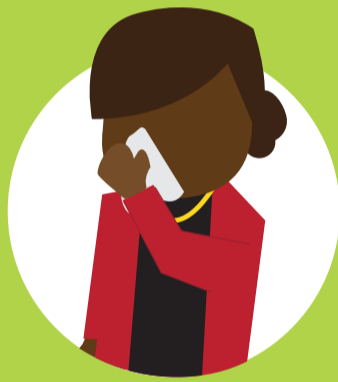
Touching objects or surfaces contaminated by a person with a confirmed infection, and then touching your mouth or face.

What else can I do?

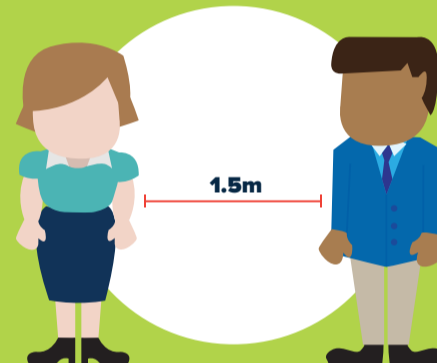
If you are sick, stay away from others – that is the most important thing you can do.



Wash your hands frequently with soap and water, before and after eating, and after going to the toilet



Cover your cough and sneeze, dispose of tissues, and use alcohol-based hand sanitiser



If unwell, avoid contact with others (stay more than 1.5 metres from people)



At times you may be required to undertake health monitoring, this may include temperature checking and / or answering a health questionnaire

These simple, common sense actions help reduce risk to you and to others. They will help to slow the spread of disease in the community – and you can use them every day – in your home, workplace, school and while out in public.

At work

Steps for practicing COVID safety in the workplace include:

- Stop shaking hands to greet others
- Hold meetings via video conferencing or phone call
- Follow site specific COVID safe plans
- Hold essential meetings outside in the open air if possible
- Promote good hand, sneeze and cough hygiene
- Provide alcohol based hand rub for all staff and workers
- Eat lunch at your desk or outside rather than in the lunch room
- Regularly clean and disinfect surfaces that many people touch
- Open windows or adjust air conditioning for more ventilation
- Limit food handling and sharing of food in the workplace
- Avoid non-essential travel
- Use appropriate PPE where required
- Consider if you can reschedule, stagger or cancel non-essential meetings

DEVELOPED A FEVER OR COUGH?



ISOLATE YOURSELF



CALL YOUR DOCTOR



LIST TRAVEL HISTORY



COVER YOUR COUGH



WASH HANDS OFTEN

This COVID-19 situation is changing rapidly and you're encouraged to keep up to date by visiting the following website:
www.health.gov.au/news/health-alerts/novel-coronavirus-2019-ncov-health-alert

On Assignment

Guidelines to follow whilst on assignment

- **Be on time** - In fact, try and be a little early for your assignment. If you are running late or will be away sick, you must call HOBAN Recruitment and advise us before your assignment is due to start. Reasonable notice of absence is minimum one hour before your start time that day.
- **Be professional** - Remember that your approach and attitude are also measures of your work performance.
- **Dress appropriately for each assignment** - Your HOBAN consultant will let you know the work environment you will be going to, and what standard of dress is expected. If you are ever in doubt, dress conservatively on the first day.
- **Don't be afraid to ask questions on the job** - If you have any queries about work instructions, office hours, or client facilities, don't hesitate to ask your supervisor or HOBAN Recruitment. If you have queries or problems with the assignment overall, call your HOBAN consultant immediately.
- **Clarify policy** - Take time to familiarise yourself with workplace policies. If you are unsure about expected conduct, ask your manager or the HOBAN Recruitment team. Please check with HOBAN prior to agreeing to work overtime.
- **Limit personal calls whilst on assignment** - It is strongly advised that you refrain from making or taking personal calls during time which is being billed to the client. Phone calls of a personal nature should be arranged during breaks. In the case of an emergency, it is most important to ask permission prior to making any personal calls.
- **Mobile phones** - Please ensure that all mobile phones are switched off whilst on assignment.
- **Email, intranet and internet** - Do not use email or the internet for your own personal use whilst on assignment. Do not retain any documents, computer disks or physical objects on which confidential information is stored. Please refer to our *Email, Intranet and Internet policy*.



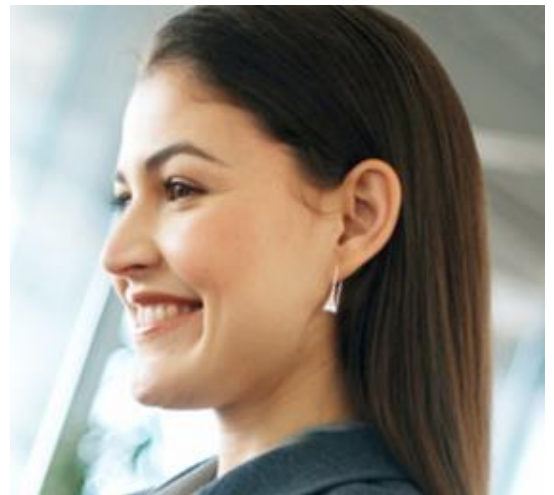
The following are guidelines to aid your success as a HOBAN Recruitment temporary.

Please familiarise yourself with these guidelines each time you commence a new assignment with HOBAN.

- **Confidentiality of information** - You may, in your assignment have access to confidential information. Please refrain from discussing the specific details of your work with anyone but your immediate supervisor. You may also be exposed to gossip and internal issues. Please ignore them, as in most cases it pays to maintain a neutral stance.
- **Client confidentiality** - Please keep in mind that the confidentiality agreement you have signed in your employment contract not only covers the information you have been privy to whilst on HOBAN Recruitment assignments, but also the names of those companies. For example, do not include the names of those companies on your resume or work application forms.
- **Change of details** - If you are moving house or have a new phone number or email address, please inform your HOBAN Recruitment consultant in writing as soon as possible. This ensures that you will continue to receive pay advice and correspondence from HOBAN Recruitment and will also help your consultant to contact you easily in the case of a possible assignment.
- **Skills updates** - One of the advantages of being a temporary employee is gaining experience across a range of industries, in various roles, as well as being exposed to learning new skills along the way.
- **Contact** - If you have a direct line on assignment, please provide this to us so we can contact you easily.

By keeping your HOBAN Recruitment consultant informed of your new skills, you will be put forward for more advanced roles, sometimes with higher rates.

This will also ensure that your temporary assignments are professionally challenging and rewarding.



It is very important to call us when:

- You cannot attend your assignment due to illness or any other reason. Please ensure you give as much notice as possible. *See our contacts section at the front of this book.*
- The skills required do not match the assignment description provided by your consultant.
- To advise us of any new skills acquired whilst on assignment.
- If you are offered permanent work whilst on assignment.

Important Payroll Information

Employment Conditions

When employed on client assignments with HOBAN Recruitment, your terms of employment will be based on your Employment contract - On-Hire Casual.

Each time you work at a client site, your consultant will advise you of the relevant pay and conditions which will apply. Your pay rate includes casual loading which is in lieu of payment for annual leave, sick leave and public holidays. If you have any questions regarding the terms and conditions of your employment, please contact your consultant.

Length of Temporary Assignments

Temporary assignments may vary in length. When you are assigned by HOBAN Recruitment, we will brief you on the anticipated length of each assignment. Remember that a number of factors can cause your assignment length to increase or decrease. Changes to internal workload, operational requirements and budgetary funding can all impact - sometimes at short notice. If you have any questions regarding assignment length, please contact your consultant.

Payment of Wages

For each week (Monday to Sunday), a timesheet must be completed. Many client sites use HOBAN's online timesheets. These can be accessed via our website from the [Temporary Staff](#) page.

Many sites also use group timesheets or time clocks and you will be advised of this on a case by case basis.

Your pay advice will be sent electronically via email upon payment of wages into your bank account each week or fortnight in line with the terms of the applicable award or contractual agreement. Please note that timesheet completion and submission is *your responsibility*. If you do not ensure that it is authorised and sent accordingly, you may not be paid.

Completing your Timesheet

Accurately complete the date and time you commenced each day, as well as the number of minutes taken for your meal breaks. Please total each day's hours and at the end of the week total it to the nearest quarter hour.

On completion of your assignment (or Friday of each week if the assignment is long term) please submit your timesheet using our online timesheet facility for approval by your supervisor.

It is your responsibility to get your timesheet to us. Please note the deadline for timesheets is **9.00am MONDAY**. No processing of late timesheets will take place. In the case of a long weekend, your timesheet must reach us by 9.00am Tuesday morning. A pay advice slip will be sent electronically via email to you each time you are paid by us.

Online Timesheets

- If you complete an online timesheet:
- Complete your online timesheet by *5.30pm Friday* (or over the weekend if you work)
- Ensure you *submit* your timesheet. This will alert your timesheet authoriser to authorise your timesheet.
- Check the *status* of your online timesheet. If it still reads *Pending Approval* it still has not been authorised and cannot be processed for payment.
- It is your responsibility to ensure that your timesheet status changes from *Pending Approval* to *Ready for Interpretation* on Monday.
- If your timesheet is not authorised on time, your pay may be delayed until the following week.



Therefore, please ensure that your timesheet is authorised in a timely manner so that HOBAN Recruitment can pay you on time.

If you would like payroll to check that your timesheet has been imported and will be processed, please email payroll@hoban.com.au.

Superannuation

As part of our service to all temporary staff, HOBAN Recruitment participates in the Federal Government's Superannuation Guarantee Scheme. This scheme provides that any individual who has gross earnings of \$450 or more per calendar month must have superannuation contributions calculated on their earnings.

Further information regarding superannuation can be found on our website at www.hoban.com.au from the [Your Super](#) page under the [HOBAN Temporaries](#) menu.

Tax File Number

Tax File Numbers (TFN) must be provided before commencement of your first temporary assignment through HOBAN Recruitment.

If you fail to provide a signed Tax File Number Declaration form when commencing a payer/payee relationship with HOBAN Recruitment, we are bound by the Australian Taxation Office to tax you at the highest marginal tax rate, plus Medicare levy.

Payment Summaries

After the end of the financial year we will email you your Payment Summary. If your email address changes, please notify us as soon as possible.

Change of Address

Please advise us immediately in writing if you have a change of address or telephone number so that we can update your records. Please ensure you notify us if your email address changes, as your pay advice is sent by email.

Performance Evaluation

Your performance is monitored throughout each temporary assignment. HOBAN's performance evaluation asks the client to assess you in the following categories:

- Punctuality and Attendance
- Attitude and Flexibility
- Personal Presentation
- Ability in the Role
- Initiative

We pass on feedback where possible to you regarding your assignment. If you have not received any feedback, please contact your HOBAN consultant.

HOBAN Recruitment recognises our temporary staff for excellent performance in their assignments.

We have functions which are specifically designed to allow us the opportunity to publicly acknowledge our temporary staff for a job (or jobs) well done.

Additionally, recognition of outstanding performance is in the form of awards, certificates or the opportunity to attend training and learn new skills.



Employee Assistance Program

HOBAN offers an Employee Assistance Program as a confidential, independent service to all employees of HOBAN. Details of your discussion will not be shared with your manager or your workplace.

When you access Employee Assist, you will speak with a qualified, experienced counsellor across a range of issues.

EAP Counsellors:

- Understand your situation and gain insights to inform decisions and directions
- Develop strategies to drive positive changes in behaviour and lifestyle
- Learn how to adapt to change and seize opportunities
- Provide coping strategies when dealing with difficult situations

To make an appointment to speak with an EAP Counsellor:

- Visit www.convergeinternational.com.au and click on the Contact Us to access their live chat service.
- Download their EAP Connect App and connect with them through the appointment icon.

Work Health Safety and Environment

SAFETY IS EVERYONE'S RESPONSIBILITY!

Our Legal Obligations

Both HOBAN Recruitment and the client (host employer) have a legal obligation to:

- As much as is practicable, ensure your workplace is safe
- Provide enough information, training and supervision to enable you to carry out work in a safe manner
- Monitor work conditions and ensure they are safe and free from risks to your health

Your Obligations

- Ensure your own safety and your co-workers' safety in the workplace
- Cooperate and follow health and safety procedures
- Attend and participate in any training sessions provided
- Report any workplace injuries, incidents or hazards to the client and to HOBAN Recruitment immediately
- Participate in rehabilitation and return to work programs after a work-related injury
- To disclose all pre-existing injuries and diseases which could be affected by the nature of any proposed employment offered to you by HOBAN Recruitment

Our Client (Host Employer) Obligations

Upon commencement of each assignment, your site supervisor/manager should conduct an induction specific to their workplace. Evacuation procedures, injury reporting and safe work methods should be covered, along with site specific policies (e.g. Internet / EEO / Manual Handling etc.). If the client does not complete an induction with you, please advise your HOBAN consultant immediately.

It is HOBAN Recruitment's aim that each temporary, contractor or successfully placed permanent applicant be provided with a safe and healthy place in which to work.

However, safety at work is both an individual and shared responsibility and ultimately rests on the willingness of everyone to cooperate and work collectively

Specific Safety Policies

Site Safety Rules are those rules that generally apply to all employees and contractors.

For example:

- Buildings must be promptly evacuated when the evacuation alarm sounds, via the nearest nominated emergency exit. Employees are to follow the direction given by evacuation wardens.
- Specific Work Procedures and Safety Rules that apply to individual jobs must be followed at all times.
- Employees must always use personal protective equipment or other protective equipment provided for specific tasks if this is required by our client.

- Exits, fire extinguishers, hose reel cupboards and hydrants must be kept clear at all times. It is an offence to use such equipment for purposes other than to fight a fire. Storage of any materials in hose reel or electrical cupboards is strictly prohibited.
- No person is to bring on to site or use any substances, drugs or alcohol that may impair their ability to function safely.
- All injuries or incidents are to be reported to first aid attendants and accidents or near miss accidents not involving injury must be reported to the Work Health Safety Officer.

Client Induction

Ensure the client completes a safety induction prior to you commencing work.

If an induction is not carried out, request one and let your HOBAN consultant know immediately.

Make sure you understand all instructions before commencing work.



Emergency Evacuation Steps

Evacuation system alert consists of two tones:

- **Alert tone** - “Beep Beep” sounding tone. Stop working and prepare to evacuate.
- **Evacuate tone** - “Whoop Whoop” sound accompanied by a voice message, advising staff to evacuate the building. Follow the instructions of the wardens on how to safely evacuate your work area.

First Aid

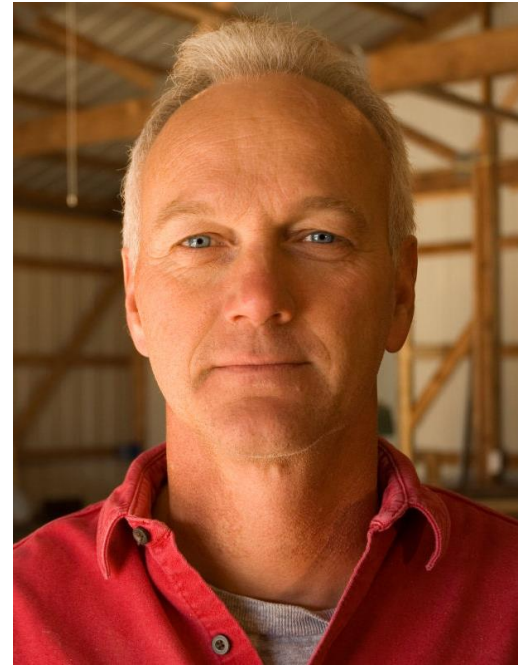
- During your onsite induction, pay attention to the names of First Aid Officers.
- Most workplaces will have a WHS board with photographs and contact numbers.

If you require First Aid, report it to your First Aid Officer and contact HOBAN Recruitment as soon as possible.

Injuries or Near Misses

If you are hurt at work or see something that you think is dangerous:

- Tell your supervisor immediately and inform HOBAN as soon as possible
- A Hazard/Accident report MUST be completed. This form is available online at www.hoban.com.au under the [HOBAN Temporaries](#) section or by phoning your HOBAN consultant.
- Ensure you obtain a copy of the report for your records.
- If you choose to claim for WorkCover, supply a WorkCover Certificate if time off work is required.



Drugs and Alcohol

- Under no circumstances is any temporary/contractor to work under the influence of alcohol or drugs.
- If you are on prescribed medication which may impact your work, please speak to your HOBAN consultant or WHS representative.
- You are forbidden to bring alcohol into the workplace in any form, or to attempt to work if under the influence of alcohol/drugs. HOBAN has a zero tolerance policy.
- You may be required to undergo random drug and alcohol testing at registration and/or whilst on assignment with HOBAN.
- HOBAN administers a drug and alcohol assessment whenever an incident, injury or accident occurs.

Any employee who disregards these guidelines will be disciplined, and a breach of this rule may result in termination of your assignment and your employment with HOBAN Recruitment.

Office Safety

- Ensure you properly adjust your workstation before commencing work.
- Your chair should be adjusted so that your knees are at 90 degrees to the chair when seated. Make sure the chair supports your lower back.
- Your monitor should be directly in front of you at eye level. Documents should be placed alongside the monitor to minimise head movement.
- Objects that you frequently use should be located within easy reach to avoid overstretching.
- Your mouse should be to the immediate right or left of the keyboard.
- Take regular “stretch” breaks.

Physical Fitness

Your HOBAN consultant will explain the physical requirements of each assignment. To ensure your health and safety, please make the consultant aware of any pre-existing conditions that may affect your work performance while on site.

Equipment Responsibility

- Report any faulty machinery/equipment immediately to your supervisor and HOBAN Recruitment.
- Do not attempt to use machinery unless you have the appropriate licence. The licence must also be sighted by your HOBAN consultant (e.g. Forklift/truck licence).
- Observe any lock out/tag out procedures.
- Do not operate equipment/machinery that you have not been trained to use. You should be trained and sign off on use of all equipment/machinery that you have not used previously.

Housekeeping

Observe good housekeeping practices to prevent accidents. Make sure that walkways are clear of rubbish and electrical cords and that work areas are kept neat and tidy. Clean up all spills immediately.

Chemicals and Hazardous Substances

- DO NOT handle any chemicals unless you have been trained to do so in a safe manner.
- Material Safety Data Sheets should be available for you outlining potential risks and First Aid measures.
- Ensure that you are wearing ALL necessary protective equipment.

Outdoor Workers

- If you are working outdoors (e.g. Local Council workers), please be aware of needle stick hazards. ALWAYS wear appropriate gloves when gardening, digging, rubbish collecting etc. The workplace should provide specific training in this area.

To protect yourself from the sun, you must wear a long-sleeved shirt, long pants, a wide brimmed hat, sunscreen, sunglasses or protective glasses, as well as drink plenty of water.

Clothing

- Depending on the nature of the assignment you may be required to wear (or be provided with) a number of the following protective clothing or items:
 - Aprons/Overalls
 - Spectacles
 - Gloves
 - Footrest
 - Goggles
 - Earmuffs
 - Safety boots
 - Headsets
 - Helmets
 - Dust masks
 - Ergonomic chairs
 - Sunscreen
- All appropriate safety equipment must be worn as instructed. Eye protection must be worn when advised by your supervisor or appropriate signage. If in doubt, ask. Remember, with eyes there are only two per person - protect them!
- Report any faulty equipment immediately to your supervisor and your HOBAN consultant. Consult your supervisor if you are lacking any personal protective equipment (PPE).
- Hearing protection must be worn where it has been assessed an area has hazardous noise levels. These areas may also have been labelled with appropriate signage.
- Some portable equipment may also require the operator to use hearing protection (for example, angle

grinders). These areas may also have been labelled with appropriate signage.

- Loose clothing should not be worn. Long ties, scarves and belts with loose ends are a menace to safety. Ensure that long sleeve shirts and overalls are correctly buttoned up. Suitable clothing is essential.
- Suitable footwear is essential and must be worn at all times.

Please note that failure to wear steel capped boots when required will result in you being unable to commence work.

Manual Handling

If your job involves lifting, protect your back. Think before you lift!

- Assess the load, action and movement, location of load and distance moved.
- Your posture - remember to lift from the knees with a straight back.
- If the load is too heavy for you, ask for assistance.
- Where possible use a mechanical aid such as a trolley/lift to assist.
- Do not attempt to lift any object beyond what feels comfortable.
- Strong muscles are not developed by straining. If in doubt, ask for help with lifting. Always remember to bend your knees and not your back. Always have a firm grip on the load. Learn the correct way to lift and do not try to be a “human crane”.
- Where manual handling aids are provided, they must be utilised.
- Use only the lifting equipment designed and provided for the job to be done. Never use lifting equipment which you have reason to believe may be faulty.
- Never improvise with lifting gear, as this could lead to serious accidents.

Work Health Safety

We value your feedback about WHS matters. You are welcome to contact your HOBAN Recruitment consultant or HOBAN Recruitment’s WHS Committee Chair **Trudy MacGregor** by any of the following:

Trudy MacGregor

WHS Committee Chair

HOBAN Recruitment, Level 35, 360 Collins Street, Melbourne VIC 3000

Phone: 03 9203 4900

Email: trudym@hoban.com.au

EEO, Bullying & Harassment Policy

HOBAN Recruitment is committed to the principle of Equal Employment Opportunity (EEO), and encourages all applicants to enjoy fair access to employment opportunities. All employment related decisions are based on merit and are not influenced by factors that are irrelevant to the person's ability to fulfil inherent job requirements.

We also aim to provide an environment in which people can work without the distress or interference caused by harassment. Harassment is any uninvited, unwelcome and offensive behaviour which involves verbal, written, visual or physical affront against another person.

Harassment can involve unwelcome and offensive behaviour that relates to a person's gender, racial or ethnic background, religion, political affiliation, sexual preference or personal attributes, colour, physical features, industrial activity, pregnancy, status as a parent or carer, or personal association with a person with any of the above attributes.

Bullying is repeated, unreasonable or inappropriate workplace behaviour that threatens, intimidates, insults, humiliates, excludes and/or undermines a person or group. Some examples of behaviour which may be considered harassment or bullying include making, displaying or distributing suggestive or offensive jokes, comments, photos or videos; making suggestive or offensive gestures; unfair or excessive criticism; insulting or mimicking a person or group of people and using aggressive language. Reasonable management actions carried out in a fair way are not bullying. For example, setting performance goals, standards and deadlines; performance management processes etc.

In all situations it is stated policy that any bullying or harassment is unacceptable and will not be tolerated in any circumstances.

Any employee who believes they have been harassed should, when possible, tell the harasser that their behaviour is offensive and that it should stop. If the offensive behaviour does not stop, the employee who believes they are being harassed is encouraged to make a complaint on an informal basis. All complaints will be acted upon and will be treated seriously, impartially and sympathetically.

HOBAN will take reasonable steps to protect people who responsibly exercise their rights under the policy against victimisation. In any cases where bullying or harassment has been sustained, appropriate action will be taken. Such action may include counselling or in more serious cases, discipline up to or including dismissal. We have a robust process to manage complaints, which can be provided upon request. Those in authority who knowingly tolerate are also guilty of misconduct and will be held liable for the harassment occurring.

It is our expectation that all times, your behaviour reflects the spirit of this legislation. If you experience discrimination or sexual harassment in the workplace, you should first make it clear that such behaviour is offensive to you. If it continues, please contact your HOBAN Recruitment consultant immediately.

Should you wish to discuss any of the above, please contact our EEO and Harassment Officer **Emily Robertson** by any of the following:

Emily Robertson, EEO and Harassment Officer

HOBAN Recruitment, Level 35, 360 Collins Street, Melbourne VIC 3000

Phone: 03 9203 4904 Email: emilyr@hoban.com.au

Privacy Policy & Collection Statement

HOBAN Recruitment Pty Ltd ACN 052 201 313 (HOBAN) is committed to protecting personal information collected from you throughout the recruitment and selection process. Personal information includes things like the information you include on your CV or job application. For a more detailed list of what personal information is please refer to the next section in this policy.

If you are placed into a job by us, any further personal information collected or generated as a result of our relationship is also protected from access by unauthorised individuals.

Where you are a person seeking a placement, we will only ask for and record personal information that will help us to place you in the jobs best suited to you, and we will not pass on any personal information without your consent. We require personal information passed to us by clients or referees to be treated in the same way. By providing your details to us, you are agreeing that we may contact you, either by phone, email or SMS, to make you aware of new job opportunities.

We may also ask for and record personal information from other individuals with whom we interact, for example, personnel employed or engaged by our clients to deal with us.

We strive to protect data transmitted to us over the internet but because such transmissions cannot be guaranteed to be 100% secure, we do not warrant the security of personal information transmitted in this way, but we will make every effort to make it secure on our own systems.

Information collected by us will not be sold, rented or licensed to anyone else. It may be necessary for us to hold records for an extended period of time. However, when the information is no longer of use to us, we may destroy or de-identify it in a manner that protects your privacy. Likewise, you have the option of requesting that your details be deleted from our databases at any time. Personal information held by us is available for your review in accordance with the provisions of the Privacy Act. All requests for review or deletion of your personal information should be submitted to privacy@hoban.com.au. We will respond to your request within 30 days.

Collection of Personal and Sensitive Information

Your personal information may be collected when you deal with us by mail, telephone, fax, e-mail, social media, or when you submit your details via our website or a job board. If you are a person engaged by a client to interact with us or other member of the public we may collect personal information by these methods for the purposes for which you provide it (for example, when you are an employee of a client, so that we can contact you about potential candidates).

Where you are seeking a placement, we only want you to give us personal information that is relevant to the job you are applying for, or that you want us to use in finding you a future job. If you provide such information we understand you want us to use it for this purpose. The kinds of personal information we would collect might include:

- Your employment preferences
- Contact details
- Employment history
- Education, qualifications, certifications
- Professional memberships, associations, affiliations with relevant industry bodies or organisations
- Awards, recognition and special achievements
- Referee details
- Relevant volunteer or unpaid work
- Other information that will help us to match you to suitable job opportunities
- If we place you into a job, your banking, tax and superannuation details

Personal and sensitive information may also be collected when:

- We receive results of inquiries that we might make with your permission of your former employers, work colleagues, professional associations or registration body;
- We receive the results of any competency, psychometric or medical assessment;
- We receive feedback on your performance;
- We receive any complaint from or about you in the workplace;
- We receive any information about a workplace accident in which you are involved;
- We receive any information about any insurance investigation, litigation, registration or professional disciplinary matter, criminal matter, inquest or inquiry in which you are involved;
- You provide us with any additional information about yourself; and
- When as a representative of a client you provide us with personal information to assist us in the provision or delivery of services to you (such as name, address, email details, employment position).

Your personal and sensitive information may be used in connection with:

- Your actual or possible placement in a job;
- Our assessment of your ongoing performance and prospects;
- Any test or assessment (including medical tests and assessments) that you might be required to undergo;
- Our (or our client's) identification of your training needs;
- Any workplace rehabilitation;
- Our management of any complaint, investigation or inquiry in which you are involved;
- Any insurance claim or proposal that requires disclosure of your personal or sensitive information;
- The provision of services to you (as a representative of a client) including any marketing or other distribution lists that you sign up for.

Who your personal and sensitive information may be disclosed to:

- Your potential and actual employers;
- Referees;
- Our associated companies and subsidiaries;
- Our insurers for Workers Compensation in the event that you are involved in a workplace accident or injury that results in a claim;
- A Workers Compensation body in the event that you are involved in a workplace accident or injury that results in a claim;
- Medical professionals, medical facilities or health authorities if a medical assessment is required as part of placing you into a job or in the event you are involved in a workplace accident or injury that requires medical attention;
- Companies we partner with to provide probity / assessment services if this is required as part of placing you into a job, for example:
 - The validation of your right to work in Australia;
 - Credentials and qualifications;
 - Psychometric assessments;
 - Skills testing;
 - Reference, criminal background checking; or

- Health, wellness, or drug screening.
- Third parties involved in providing, managing or administering HOBAN's services, for example our marketing consultancy that helps us communicate better with you, a US-based service who sends email communications on our behalf, and the organisation we outsource a component of our administrative support function to that has employees in the Philippines. Any recipients of the information outside HOBAN are bound by obligations of confidentiality to us and contractually agree to comply with the APPs;
- Financial institutions, superannuation and managed funds organisations, and their advisers if we place you into a job;
- Other organisations involved in our normal business practices, including our agents and contractors;
- Any person with a lawful entitlement to obtain the information; and
- Prospective candidates, when authorised or permitted to do so.

How we hold your personal information:

Your information may be stored in hard copy or electronic format, in storage facilities that we own and operate ourselves, or that are owned and operated by our service providers. The security of your personal information is important to us and we take reasonable steps to protect it from misuse, interference and loss, and from unauthorised access, modification or disclosure.

While we take these steps to maintain the security of your information, you should be aware of the many information security risks that exist today and take appropriate care to help safeguard your information.

If you do not give us the information we seek:

- We may be limited in our ability to match you to suitable work opportunities; and
- We may be limited in our ability to place you in work.

You can gain access to your information to correct it if it is wrong.

The Privacy Act sets out your rights to see and have a copy of personal and sensitive information about you that we hold.

If you wish to exercise this right, please email privacy@hoban.com.au and we will respond to your request within 30 days.

How to contact our Privacy Officer:

If you have a question, issue or complaint relating to our privacy policy, the way we have managed your personal and sensitive information, or if you believe we have breached the Act or an applicable APP code, you can email privacy@hoban.com.au or call 03 9203 4900 and our Privacy Officer will contact you within 30 days. Our Privacy Officer will work closely with you to understand the nature of any query or complaint and achieve a satisfactory resolution in a timely manner that is compliant with current privacy legislation.

Diversity Policy

Diversity Vision

HOBAN recognises its talented and diverse workforce as a key competitive advantage. Our business success is a reflection of the quality and skill of our people. HOBAN is committed to seeking out and retaining the finest human talent to ensure top business growth and performance.

Diversity management benefits individuals, teams, our business as a whole, and our customers. We recognise that each employee brings their own unique capabilities, experiences and characteristics to their work. We value such diversity at all levels of the business in all that we do.

HOBAN believes in treating all people with respect and dignity. We strive to create and foster a supportive and understanding environment in which all individuals realise their maximum potential within the company, regardless of their differences. We are committed to employing the best people to do the best job possible. We recognise the importance of reflecting the diversity of our customers and markets in our workforce. The diverse capabilities that reside within our talented workforce, position HOBAN to anticipate and fulfil the needs of our diverse customers, both domestically and internationally, providing high quality products/services.

Our workforce is diverse across many dimensions. Our diversity encompasses differences in ethnicity, gender, language, age, sexual orientation, religion, socio-economic status, people with disability, experience, and education. We believe that the wide array of perspectives that results from such diversity promotes innovation and business success. Managing diversity makes us more creative, flexible, productive and competitive.

Recruitment

HOBAN recruits on the basis of capabilities i.e. the essential knowledge, skills and attributes required for every position.

As a national recruitment provider, HOBAN recruits people from both major cities and regional/remote locations. We have established processes to identify talented individuals from under-represented groups for recruitment purposes.

Career Development and Promotion

HOBAN rewards excellence and all employees are promoted on the basis of their performance. Our managers are trained in managing diversity to ensure that employees are treated fairly and evaluated objectively.

Community Programs

HOBAN recognises that there are distinct demographic groups that have long been disadvantaged. We recognise that racism, ageism, sexism and other forms of discrimination are problems both for our organisation and society as a whole. We are committed to tackling cultural stereotypes both within and outside our organisation. We have clear reporting procedures for any type of discrimination or harassment combined with follow-up procedures to prevent future incidents.

HOBAN seeks to overcome discrimination in the wider community by working closely with many organisations who promote diversity as their core business offering.

Diversity Practices

HOBAN's diversity training encompasses raising awareness about issues surrounding diversity and developing diversity management skills.

We are committed to providing a working environment that supports the individual needs and circumstances of our diverse workforce. Accordingly, we seek to offer:

- Flexible working arrangements
- Employee education assistance
- Development Programs
- Employee Assistance Program

We encourage inclusion, open communication, constructive contribution and employee networks.

At HOBAN we embrace diversity, inclusion and equal opportunity. We welcome and encourage applications from people from all backgrounds. We provide reasonable adjustments for individuals with disability. We provide reasonable adjustments for individuals with disability. If you require an adjustment to be made during the recruitment process, please call 1300 253 935 or email adjustments@hoban.com.au.

Email, Intranet & Internet Policy

Use of Email, Intranet and Internet

Our client's hardware, software, email and internet are for business purposes only while you are on assignment. The use of email or internet must not interfere with your work obligations. Ensure you follow all policies and processes regarding email, intranet and internet at each client site where you are working.

Email and internet must not be used in the following ways:

- In any way which may be considered offensive, defamatory, obscene, pornographic, discriminatory, insulting or disruptive to any other person, or contravene the Trade Practices laws.
- To access, view, download, print or send messages or attachments (including to a home email address) any information which is considered inappropriate to friends or work colleagues. Inappropriate material includes (but is not limited to) any material of a sexual nature.
- To access other people's email account without prior authorisation from a senior manager or supervisor.
- For intentional dissemination of any computer viruses, disclosing company confidential information, or sending chain-mail, gambling, jokes, games, etc.
- Responding to any external requests for company information or complaints through email, unless you are authorised to do so.
- Sending, forwarding, printing or receiving any material or data which does not comply with the Company's policies and procedures (including our EEO & Harassment Policy), or which is contrary to the Company's best interests.

On occasion, inappropriate material may be sent to you via your email account.

Although you may be unable to control the sending of such material, you should discourage the sender by alerting them to the fact that their email does not comply with company policy, and that a breach of these guidelines can result in cessation of employment.



Software Protection

Use, copying or providing illegal software while at work could expose you and HOBAN Recruitment to civil and criminal prosecution. You should not install any program or software to your computer, or on the network, without prior permission.

Monitoring of Email, Intranet and Internet Usage

The use of the internet, intranet and email content may be monitored by the Company's IT Department on a regular basis. Where any breach of this policy is detected, HOBAN Recruitment will be advised and appropriate action will be taken.

Non-Compliance

This policy is necessary to avoid the serious ramifications of software piracy, defamation, and sexual harassment or discrimination, which can include financial penalties and serious legal consequences.

Non-compliance with this policy or the relevant policies of our clients is a serious matter, and may result in termination of your employment with HOBAN Recruitment.

Social Media Policy

Terms of Use

With the rapid growth and application of social media, HOBAN Recruitment has established these terms of use. These terms ensure that everyone who uses social media either as part of their job, or in a personal capacity, has guidance regarding the Company's expectations where the social media engagement is about HOBAN Recruitment and or our clients, their products and services, their people, their competitors and/or other business-related individuals or organisations.

Social media tools include:

- Networking sites e.g. LinkedIn, Facebook, MySpace
- Video and photo sharing websites e.g. Instagram, YouTube, Facebook
- Micro-blogging sites and blogs e.g. Twitter
- Forums and discussion boards such as Whirlpool, Yahoo, Google Groups
- Any other web sites that allow individual users or companies to use simple publishing tools.

Our aim is to protect the interests of employees, the Company and our clients. In brief, we ask that when engaging in social media you should:

- Be clear about who you are representing
- Take responsibility for ensuring that any references to the Company are factually correct and accurate and do not breach confidentiality requirements
- Show respect for the individuals and communities with which you interact.

This policy does not apply to employees' personal use of social media platforms where the employee makes no reference to the Company or clients of the Company.

This policy applies when:

You are authorised and accredited to represent the Company or one of our clients on social media platforms and are using a social media platform for business purposes.

You choose to make references to the Company, its people, products or services, and/or other business-related individuals or organisations when you are using a social media platform in a personal capacity.



When using social media sites for Company business, you must:

- Ensure that any content you publish is factually accurate and complies with relevant company policies, particularly those relating to privacy and confidentiality
- Only offer advice, support or comment on topics that fall within your area of responsibility
- Ensure you do not post material that is obscene, defamatory, threatening, harassing, discriminatory or hateful to another person or entity, including any company in the group, its employees, its contractors, its partners, its competitors and/or other business-related individuals or organisations
- Ensure you do not disclose other people's personal information in social media venues, and comply with the Privacy Policy
- Be respectful of all individuals and groups and respect copyright, privacy, financial disclosure and other applicable laws

When using social media sites for personal use and you choose to make reference to the Company, its people, products, services or any other Company matter, you must:

- Identify yourself as an employee of your Company if you refer to the Company, its people, products and services, its competitors and/or other business-related individuals or organisations
- Ensure you do not imply in any way that you are authorised to speak on the Company's behalf
- Ensure you do not knowingly use the identity of another Company employee or an employee of a business partner or client
- Be mindful during your social media engagements of the importance of not damaging the Company's reputation, commercial interests and/or bringing us into disrepute
- Disclose only publicly available information - you must not comment on or disclose confidential Company information or that of our clients
- Be personally responsible for the content of your posts online
- Use a disclaimer to ensure that your stated views and opinions are understood to be your own and not those of the Company when you reference yourself as a Company employee when expressing a view or comment on any Company issue

An example of a disclaimer is: *"the views expressed in this post are mine only and do not necessarily reflect the views of the Company."*

Breach of Policy

Should you not comply with this policy, you may face disciplinary action which may include termination of your employment. The Company may also recover from you any costs incurred as a result of a breach of this policy either during or post your employment.

IMPORTANT INFORMATION ABOUT YOUR PAY AND CONDITIONS

Employees in Australia have entitlements and protections at work, under:

FAIR WORK LAWS

- minimum entitlements for all employees
- includes the National Employment Standards

AWARDS

- set minimum pay and conditions for an industry or occupation
- cover most employees in Australia

ENTERPRISE AGREEMENTS

- set minimum pay and conditions for a particular workplace
- negotiated and approved through formal process

EMPLOYMENT CONTRACTS

- provide additional conditions for an individual employee
- can't reduce or remove minimum entitlements

Find your award at www.fairwork.gov.au. Check if your workplace has an enterprise agreement at www.fwc.gov.au/agreements

PAY

Your minimum pay rates are in your award or enterprise agreement. If there is no award or agreement for your job, you must get at least the National Minimum Wage. **You can't agree to be paid less.** Minimum pay rates are usually updated yearly.

Find out what you should get at www.fairwork.gov.au/minimum-wages

NATIONAL MINIMUM WAGE FROM 1 JULY 2019

- **\$19.49/hour** full-time or part-time
- **\$24.36/hour** casual

This is the adult rate for employees with no award or enterprise agreement. Lower rates may apply to juniors, apprentices and employees with disability.

Use our free calculators to check your pay, leave, and termination entitlements at: www.fairwork.gov.au/pact

NATIONAL EMPLOYMENT STANDARDS

These are minimum standards for all employees. Rules and exclusions may apply. **Your award or agreement may provide more.**

Find more information on the National Employment Standards at www.fairwork.gov.au/NES

	Full-time and part-time employees	Casual employees
Annual leave	✓ 4 weeks paid leave per year (pro rata for part-time employees) + 1 week for eligible shift workers	✗
Personal leave* (sick or carer's leave)	✓ 10 days paid leave per year	✗
Carer's leave	✓ 2 days unpaid leave per permissible occasion (if no paid personal leave left)	✓ 2 days unpaid leave per permissible occasion
Compassionate leave	✓ 2 days paid leave per permissible occasion	✓ 2 days unpaid leave per permissible occasion
Family & domestic violence leave	✓ 5 days unpaid leave per 12 months	✓ 5 days unpaid leave per 12 months
Community service leave	✓ 10 days paid leave with make-up pay + unpaid leave as required	✓ Unpaid leave as required
Voluntary emergency management activities	✓ Unpaid leave as required to engage in the activity	✓ Unpaid leave as required to engage in the activity
Long service leave	✓ Paid leave (amount and eligibility rules vary between states and territories)	✗ Varies between states and territories
Parental leave eligible after 12 months employment	✓ 12 months unpaid leave – can extend up to 24 months with employer's agreement	✓ 12 months unpaid leave for regular and systematic casuals – can extend up to 24 months with employer's agreement
Maximum hours of work	✓ Full-time employees - 38 hours per week + reasonable additional hours Part-time and casual employees - 38 hours or employee's ordinary weekly hours (whichever is less) + reasonable additional hours	
Public holidays	✓ A paid day off if you'd normally work. If asked to work you can refuse, if reasonable to do so	✓ An unpaid day off. If asked to work you can refuse, if reasonable to do so
Notice of termination	✓ 1-5 weeks notice (or pay instead of notice) based on length of employment and age	✗
Redundancy pay eligible after 12 months employment	✓ 4- 16 weeks pay based on length of employment	✗

IMPORTANT INFORMATION ABOUT YOUR PAY AND CONDITIONS

FLEXIBILITY

After 12 months employment, you can make a written **request for flexible working arrangements** if you're 55 or over, a carer, have a disability, are experiencing violence from a family member (or are supporting a family or household member who is), or are the parent of, or have caring responsibilities for, a child of school age or younger. This includes employees returning from parental or adoption leave asking to work part-time to care for the child. Your employer must respond in writing within 21 days. They can only say no on reasonable business grounds.

You and your employer can also **negotiate an individual flexibility arrangement**. This would change how certain terms in your award or enterprise agreement apply to you. An individual flexibility arrangement must be a genuine choice – it can't be a condition of employment – and it must leave you better off overall. Find out more at:

www.fairwork.gov.au/flexibility

DID YOU KNOW?

You can create a free My account to save your workplace information in one place at:

www.fairwork.gov.au/register

You can find free online courses to help you start a new job or have difficult conversations at work, visit:

www.fairwork.gov.au/learning

The **Record My Hours app** makes it quick and easy to record the hours you work. It's free on the App Store and Google Play.

ENDING EMPLOYMENT

When your employment ends, your final pay should include all **outstanding entitlements**, such as wages and unused annual leave and long service leave.

You may be entitled to **notice of termination**, or pay instead of notice. If you're dismissed for serious misconduct, you're not entitled to notice. If you resign you may have to give your employer notice. To check if notice is required and what should be in your final pay visit:

www.fairwork.gov.au/ending-employment

If you think your **dismissal was unfair** or unlawful, you have **21 calendar days** to lodge a claim with the Fair Work Commission. Rules and exceptions apply. Find out more at:

www.fairwork.gov.au/termination

If you work in the commercial building industry the Australian Building and Construction Commission can help.

PROTECTIONS AT WORK

All employees have protections at work. You can't be treated differently or worse because you have or exercise a workplace right, for example, the right to request flexible working arrangements, take leave or make a complaint or enquiry about your employment.

You have the right to join a union or choose not to, and to take part in lawful industrial activity or choose not to.

You also have protections when temporarily absent from work due to illness or injury, from discrimination, bullying and harassment, coercion, misrepresentation, sham contracting, and undue influence or pressure. Find out more at:

www.fairwork.gov.au/protections

AGREEMENT MAKING

Enterprise agreements are negotiated between an employer, their employees, and any employee representatives (e.g. a union). This process is called 'bargaining' and has to follow set rules. The Fair Work Commission checks and approves agreements. For information about making, varying, or terminating an enterprise agreement visit:

www.fwc.gov.au/agreements

TRANSFER OF BUSINESS

If a transfer of business occurs, your employment with your old employer ends. If you're employed by the new employer within three months to do the same (or similar) job, some of your entitlements might carry over to the new employer. This may happen if, for example, the business is sold or work is outsourced. Find out more at:

www.fairwork.gov.au/transfer-of-business

RIGHT OF ENTRY

Union officials with an entry permit can enter the workplace to talk to workers that they're entitled to represent, or to investigate suspected safety issues or breaches of workplace laws.

They must comply with certain requirements, such as notifying the employer, and can inspect or copy certain documents. Strict privacy rules apply to the permit holder, their organisation and your employer. Find out more at:

www.fwc.gov.au/entry-permits

WHO CAN HELP?

FAIR WORK OMBUDSMAN

- information and advice about pay and entitlements
- free calculators, templates and online courses
- help resolving workplace issues
- investigates and enforces breaches of workplace laws.

www.fairwork.gov.au – 13 13 94

FAIR WORK COMMISSION

- hears claims of unfair dismissal and unlawful termination, bullying, discrimination or 'adverse action' at work
- approves, varies and terminates enterprise agreements
- issues entry permits and resolves industrial disputes.

www.fwc.gov.au – 1300 799 675

www.abcc.gov.au – 1800 003 338

Aims and Beliefs

At the heart of HOBAN Recruitment's business are our "Aims and Beliefs".

These were put together by all stakeholders within our business and reflect our corporate priorities:

Aims

We aim to be the very best consultancy in our industry, providing a standard of service that others will strive for.

Our desire is for our clients and candidates to become advocates, as our future will be built upon recommendations and the strength of our reputation.

Beliefs

We respect the faith our clients place in us to deliver, enabling them to meet their objectives. For over 50 years we have valued the people in our business - our clients, candidates and staff.

*Growth through valued relationships and real solutions
...because people are important*

